



**MYCOX**  
**REM**  
Ristabilisci l'**equilibrio**

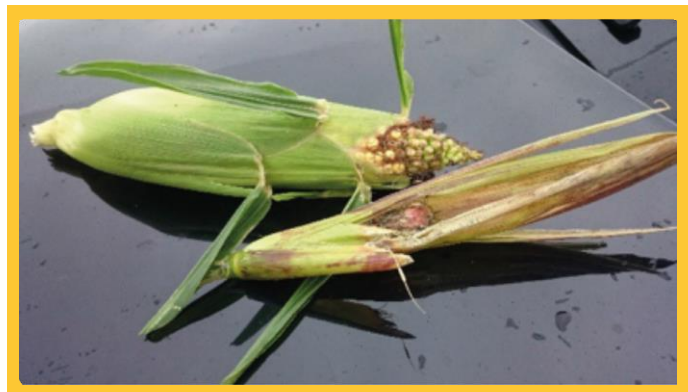
## DO YOU REALLY KNOW WHAT IS IN THE CORN THAT FEEDS YOUR ANIMALS

Granda Team is constantly by your side to assist with evaluating mycotoxin issues; due to the intense nature of climate change, mycotoxins have become a new challenge that is and rapidly evolving in the zootechnical sector.

In recent years we have understood the increasing importance of carrying out constant and accurate monitoring on all animal feed components capable of producing undesirable substances.

*"As unfortunately expected, as a result of the spring-summer climatic trends in Northern Italy, we are facing a mycotoxin emergency principally due to toxins generated by widespread attacks of Fusarium which, although a ubiquitous fungus, multiplies quickly in conditions of high humidity and cool temperatures".*

This official statement is published on the APA website (Regional Breeders Association for Milan and Lodi) to draw attention to the distressing mycotoxin emergency affecting breeders today. Fortunately, Granda Team has a solution that is capable of averting this issue which, if not tackled, can create numerous imbalances in herd health.



## The mycotoxin challenge: a victory in boosting profits.

Mycotoxicosis is a serious issue giving rise to severe health and economic consequences in dairy and beef cattle breeding alike.

Mycotoxins alter rumen function and cause intestinal malabsorption resulting in lower availability of essential nutrients required for immune system activity and to support adequate production performance.

The presence of mycotoxins also drives oxygen reactive species to be produced locally and systemically causing subsequent cytotoxic effects and depletion of antioxidant reserves

The list of symptoms manifested by

individual animals yet much more frequently the herd, is also complex as it differs greatly in terms of severity and clinical manifestations.

This is because different mycotoxins are often simultaneously produced by several fungal strains, giving rise to synergies which to date remain undefined and uncoded.

Fully grasping the extent of these problems and their related economic repercussions is fundamental in managing at best a company's daily productive processes; Granda Team is also at hand in this area as your ideal partner. Our goal is to support you in transforming analytical results into economic results.



**The MYCOX REM program: BINDS - NEUTRALIZES - TRANSFORMS**

- Mineral clay particles - bind "polar" mycotoxins
- Components of the yeast wall - bind toxins and pathogenic bacteria
- Microbial nutrient package - bolsters tissues and proliferation of beneficial microflora
- Biologically active components - act on mycotoxins to render them inactive and unavailable

**Benefits**

Una scarsa accuratezza e la poca attenzione non solo nei confronti dei punti oramai riconosciuti critici nell'allevamento della bovina da latte ma anche nei confronti dei dati e delle informazioni inerenti la specifica realtà aziendale, possono determinare pesanti perdite, in ogni caso di rilevante importanza in un contesto economico come quello attuale.

Pertanto, raccolta ed analisi accurata dei dati, in abbinamento a precisione nella gestione dell'allevamento, sono gli strumenti indispensabili per **ottimizzare il reddito dell'allevatore**.

Livello di contaminazione	MYCOX REM	MYCOX REM C
ALTO	Da valut	Da valut
MEDIO	75 gr/c/d	15 gr/c/d
BASSO	50 gr/c/d	10 gr/c/d

In presenza di micotossine nel mangime, il trattamento con MYCOX REM può apportare:

- Maggior assunzione di mangime
- Aumento della produzione di latte
- Migliori tempi di crescita
- Maggiore fertilità
- Minor mortalità di figliate emandria
- Migliore stato di salute





Via P.Massia ,1  
12038 Savigliano (CN)  
Tel.0172.715908  
[info@grandazootecnici.it](mailto:info@grandazootecnici.it)  
[www.grandazootecnici.it](http://www.grandazootecnici.it)  
[www.farelatte.it](http://www.farelatte.it)